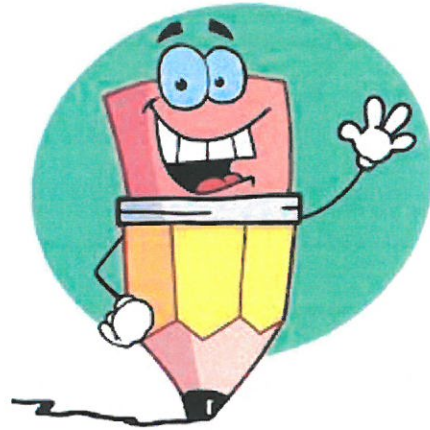


Handwriting 7



Joining s to short letters

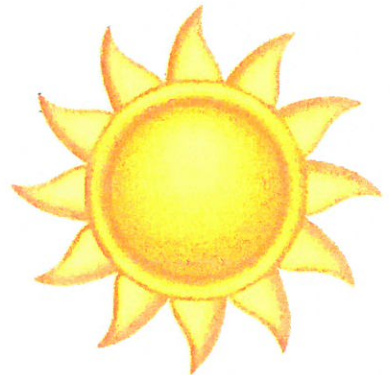
s s s s s s s s s s



sit sit sit sit sit

sip sip sip sip sip

sun sun sun sun



surf surf surf

You can sit on the tall chair.

Joining to s

os os os os

has has has has

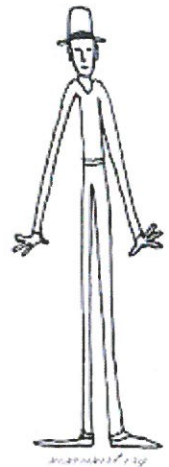


was was was was

is is is is is is

his his his his his

Is the man thin?



The fat cat was ill.

Top join to y and p

y y y y y y

oy oy oy oy

boy boy boy boy



toy toy toy toy toy

The boy has a fast toy car.

chop chop chop

mop mop mop mop

hop hop hop hop

Top join from f

f f f f f f

fan fan fan fan fan

fall fall fall fall

far far far far far

fog fog fog fog

for for for for

foil foil foil foil

Use the fan if it is too hot



Joining to ff

ffffffffff

off off off off



huff huff huff

puff puff puff

cliff cliff cliff

Can you huff and puff?

Blow the house down.

Top join to round letters

oa oa oa oa oa oa

oak oak oak



moat moat moat

coat coat coat

goat goat goat

log log log log

dog dog dog dog

frog frog frog frog



Top join to round letters 2

oo oo oo oo oo oo



too too too

moon moon moon

soon soon soon

hood hood

wood wood

It is too spooky in the wood.



Joining to e

we we we we we we

wet wet wet



well well well

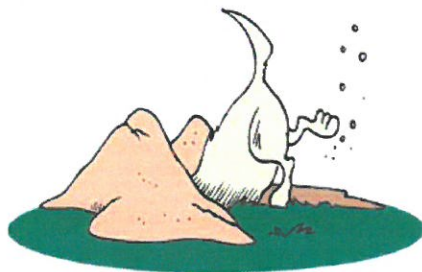
vet vet vet vet

have have have

meet meet meet

keep keep keep

deep deep deep



Joining r

r r r r r r r

cart cart cart

card card card

farm farm farm

crawl crawl crawl

creep creep creep

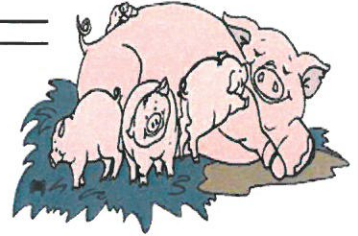
croak croak croak



Joining from g, j, y

g g g g j j j j y y y y

girl girl girl



pigs pigs pigs

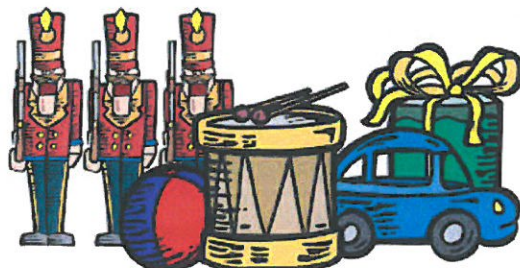
jug jug jug

join join join

yes yes yes

boys boys boys

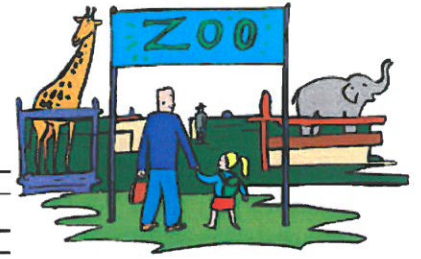
toys toys toys



Joining z

z z z z z

zip zip zip



zoo zoo zoo

zap zap zap

zuz zuz zuz zuz zuz

buzz buzz buzz

buzz buzz buzz



Joining q

q q q q q q q q q q q

quick quick quick

queen queen queen

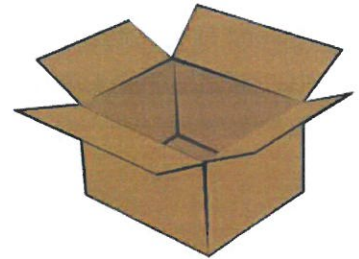
quiz quiz quiz

The snail was very quick.



Joining x

x x x x x



box box box

boxes boxes boxes

fox fox fox

foxes foxes foxes

Lots of foxes in boxes.

